



# Annual Report 2024



# 2024 By the Numbers



**2,250,000**

dollars awarded through Pathway grants to 12 local nonprofits



**878,426**

dollars refunded to local residents using the VITA tax prep program



**528,322**

grant dollars leveraged by UWSWI for other local nonprofits



**276,000**

hours of emergency and 2nd-shift childcare provided



**61,330**

books mailed to local kids through Dolly Parton's Imagination Library



**49,315**

individuals served directly through UWSWI grants and programs



**1,007**

volunteers for Day of Caring 2024

# Our Mission:

Unite resources to understand and address priority community issues

United Way of Southwestern Indiana (UWSWI) strategically engages with groups and individuals in our region to better understand the complex nature of poverty. We focus resources, funding, and support in five key areas with a goal of building strong, equitable communities.



Grant Making	Through our Pathways to Potential competitive grant program, UWSWI invests in proven, scalable initiatives that address our community’s most pressing challenges.
--------------	---

Community Engagement	UWSWI participates in regional coalitions to learn more about the barriers local people encounter on the path toward financial and social stability.
----------------------	--

Fiscal Sponsorships	We extend our 501(c)(3) tax exempt status to qualified groups or initiatives so they can provide professional development opportunities (Resilient Evansville), educational programs (Bridges out of Poverty) and events like Homeless Connect.
---------------------	---

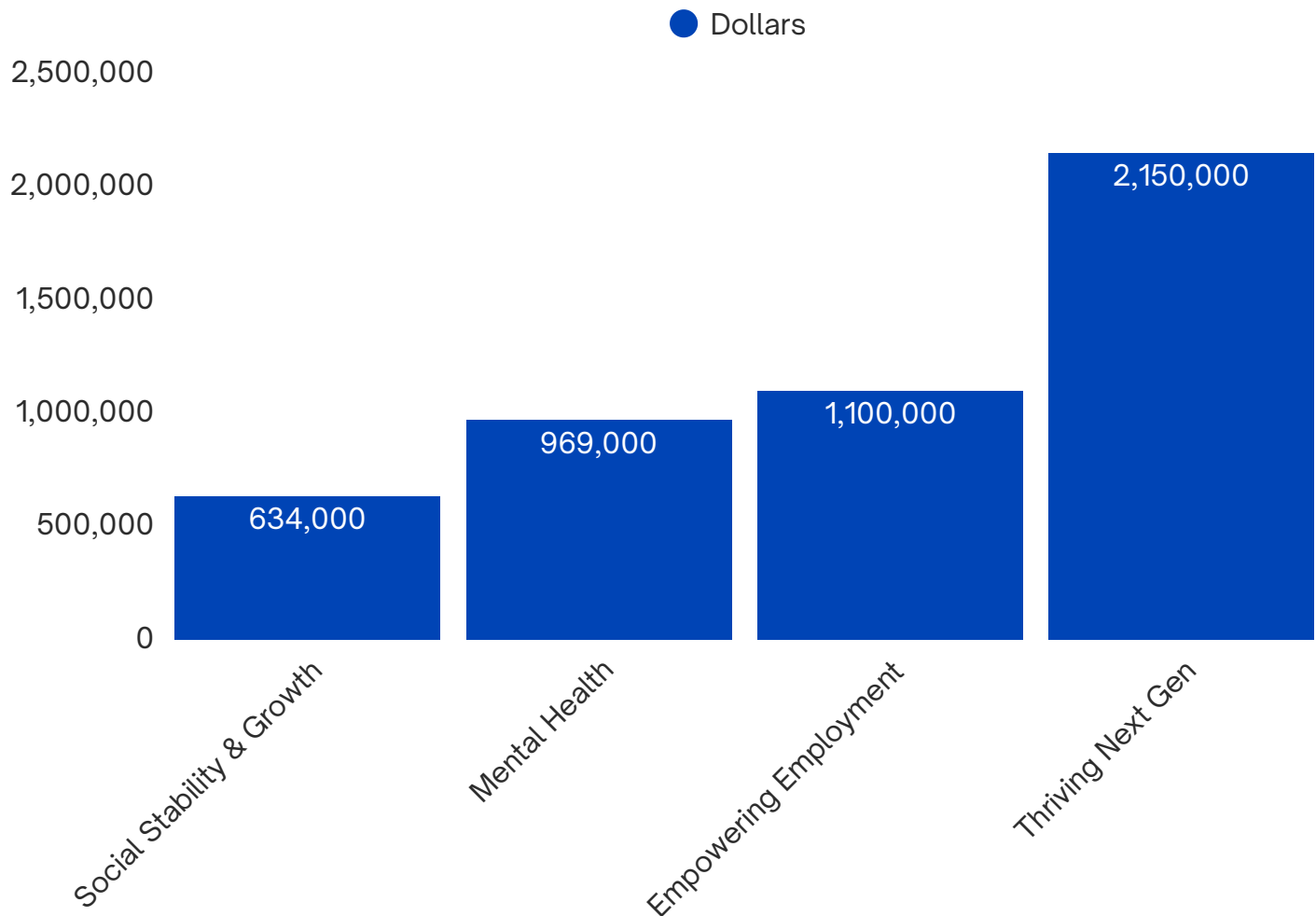
Advocacy	UWSWI engages with United Way Worldwide, Indiana United Ways, and local collaboratives to advocate for policies and systems that ensure equity for all people.
----------	--

Programs	We operate and/or administer Dolly Parton’s Imagination Library, K-Camp, and VITA free tax prep. Amplify! builds relationships with groups over-represented in poverty to share their challenges and successes.
----------	---

# Pathways to Potential

United Way SWI is working diligently to understand and address our community's biggest challenges. One thing we know for sure is it takes significant financial investment to improve complex issues like generational poverty.

We transitioned to a competitive grant model in 2022 to focus resources on programs proven to make a difference in employment barriers, school engagement, financial stability, and mental health. Reducing significant barriers to future success creates an opportunity for all people to reach their full potential.



**Nearly \$5 Million  
Invested**

As of 12-31-24

in  
**22**  
local  
organizations

providing  
hands-on  
services that  
change lives  
for the better!

# Thriving Next Gen

Through the Thriving Next Gen (TNG) Pathway Grant, UWSWI invests in nonprofit programs that work collaboratively with schools to foster strong school engagement in students.

School engagement focuses on building healthy relationships at school, practicing productive learning habits, and promoting positive attitudes about the value of education. It also leads to academic and life success in the long term, particularly in under-resourced communities.

**In 2024, eight local, nonprofit organizations were selected to receive a TNG Pathway grant.** Examples of their programs include: after-school programs, mentors in the classroom to help with behavior and academics, early learning academy, services for English language learners, resource navigator for students with disabilities, and cradle-to-career social and educational interventions.

**SIMA 100   Immigrant Welcome and Resource Center   YWCA   Big Brothers Big Sisters  
The Potters Wheel   SIRS   Dream Center Evansville   Koch Family Children's Museum of EVV**

Kids do better in life  
when they are more  
engaged in school.

88%

of students agree they  
can persevere in their  
academic work when  
faced with difficulties

90%

of kids received 3 or  
fewer referrals for  
behavior problems  
during the school year.

91%

of students say  
there's an adult at  
school they can go to  
with a problem.

77%

of students were NOT  
chronically absent  
during the entire  
academic year.

\*Data is from the  
first TNG grant cycle



# Empowering Employment

The Empowering Employment Pathway Grant invests in nonprofit programs that reduce barriers to employment for unemployed or under-employed adults. Community data showed childcare and transportation as the biggest issues preventing people from finding, securing, and maintaining employment. So, we focused funding on proven programs that help working people access childcare and a reliable ride to work.

## 2023 Empowering Employment Pathway Grant Recipients

**ARK Crisis Childcare Center   Carver Community Organization   Legal Aid Society of Evansville  
Missing Pieces Community Development Corp.   Grow SWIN Workforce Board**

A UW-funded program providing consistent childcare for families in crisis helped a 3-year-old girl close the gap on developmental delays. At the same time, it allowed her mother and grandmother a chance to secure employment and housing following a period of homelessness.

ARK Crisis Childcare Center



276,000

hours of childcare provided through emergency and second-shift programs

100%

of families enrolled in full-time care through the 2-Gen program remained employed

423

children received age-appropriate, safe, childcare in one year

3,306

people had a reliable ride to work

# Early Literacy Programs

## Imagination Library

United Way administers Dolly Parton's Imagination Library for Vanderburgh and Spencer Counties. Books are 100% free to enrolled children because generous donors enable us to provide the program.

### Total children covered

Vanderburgh Co - 5,005

Spencer Co - 539

**61,330 books mailed to local kids in 2024.**

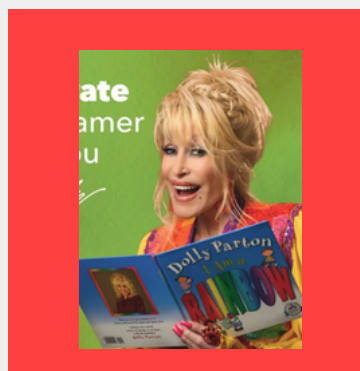
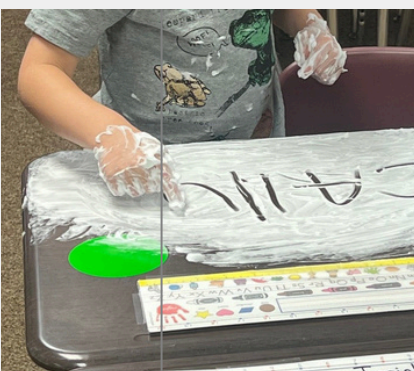
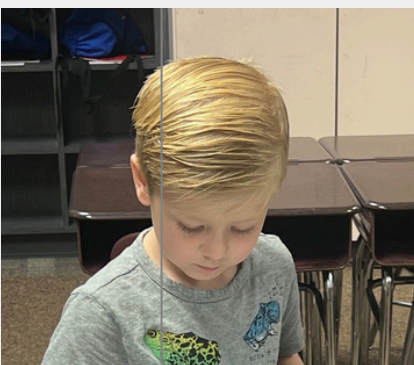
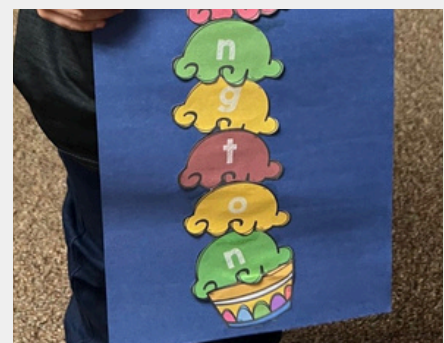
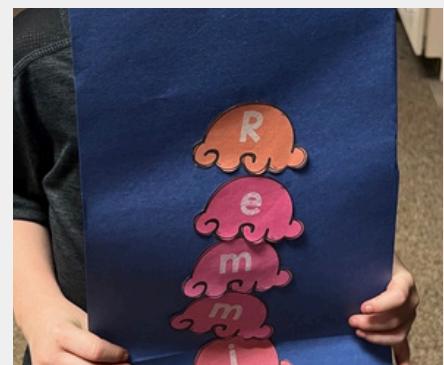
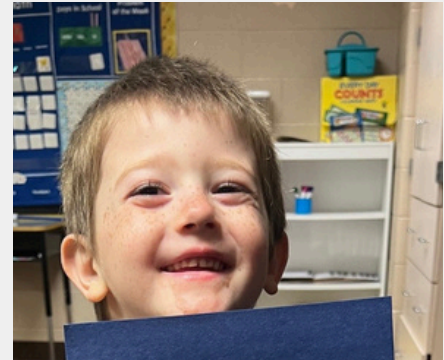
## K-Camp

K-Camp is specially designed to get children who never attended preschool or need more time in a preschool setting ready for kindergarten in the fall. Licensed teachers use fun, engaging activities to improve literacy and social-emotional skills.

**92% increased school success indicators**

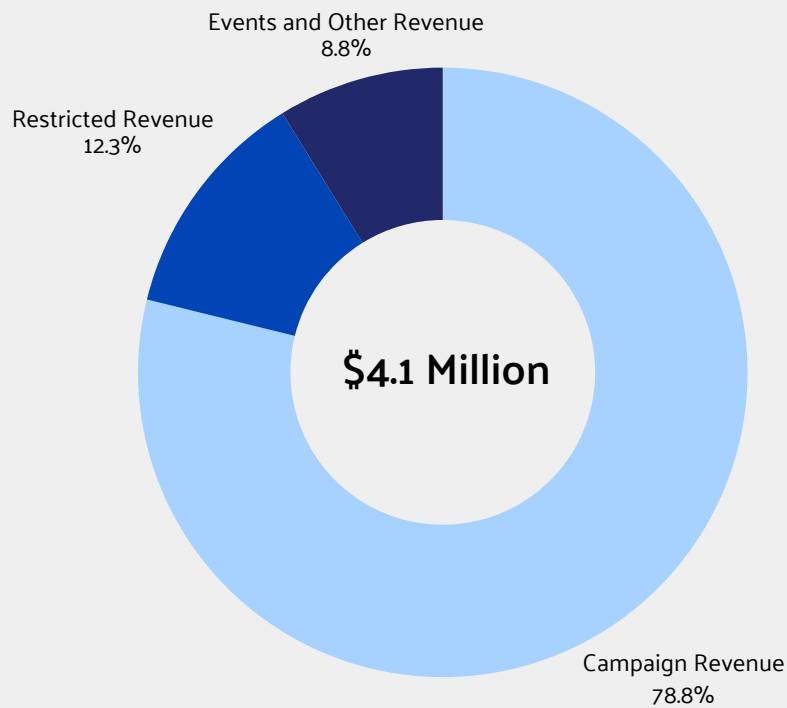
**82% increased or maintained reading skills**

**100% of parents saw improvement in their child's academic skills.**

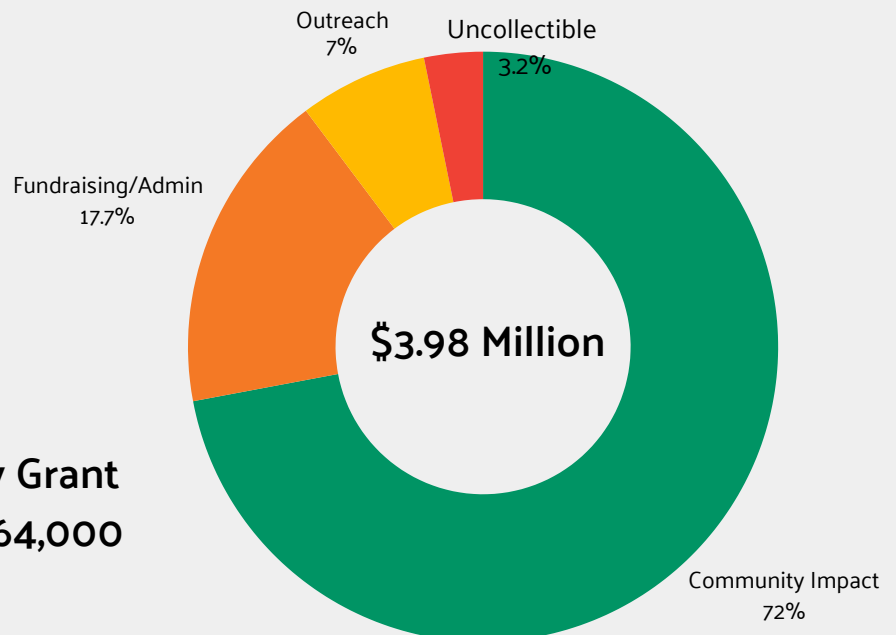


# Financial Highlights

## 2024 Revenue



## 2024 Expenses



2024 Pathway Grant  
Awards = \$2,264,000